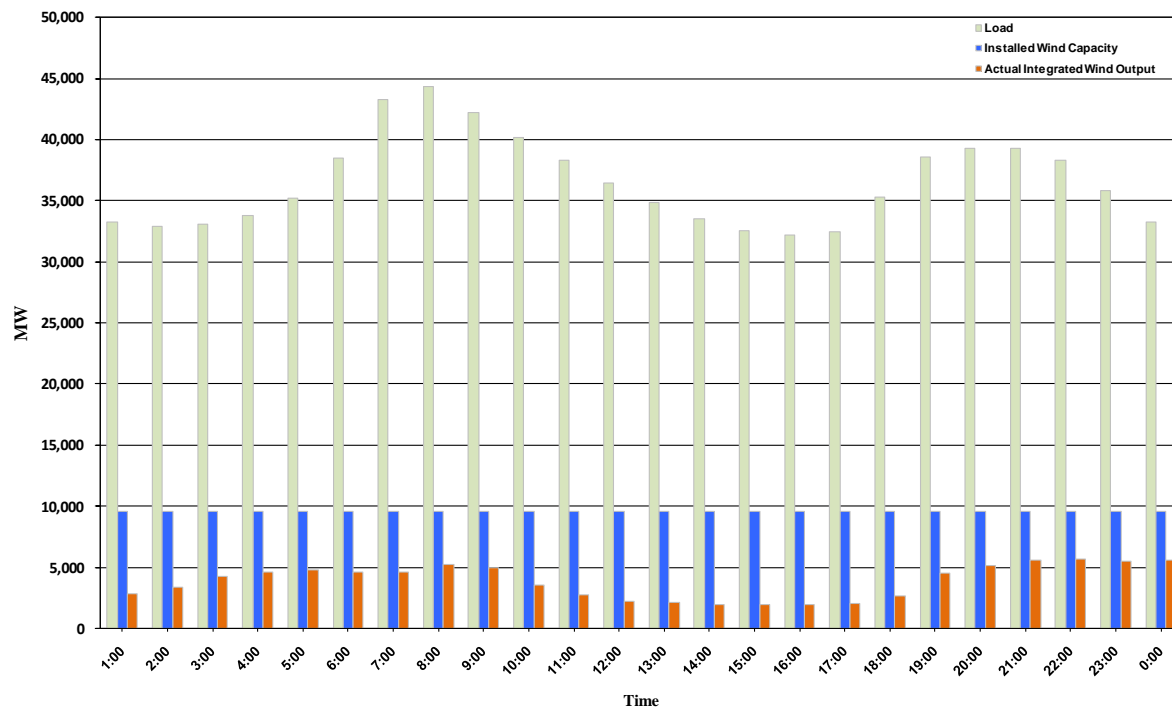




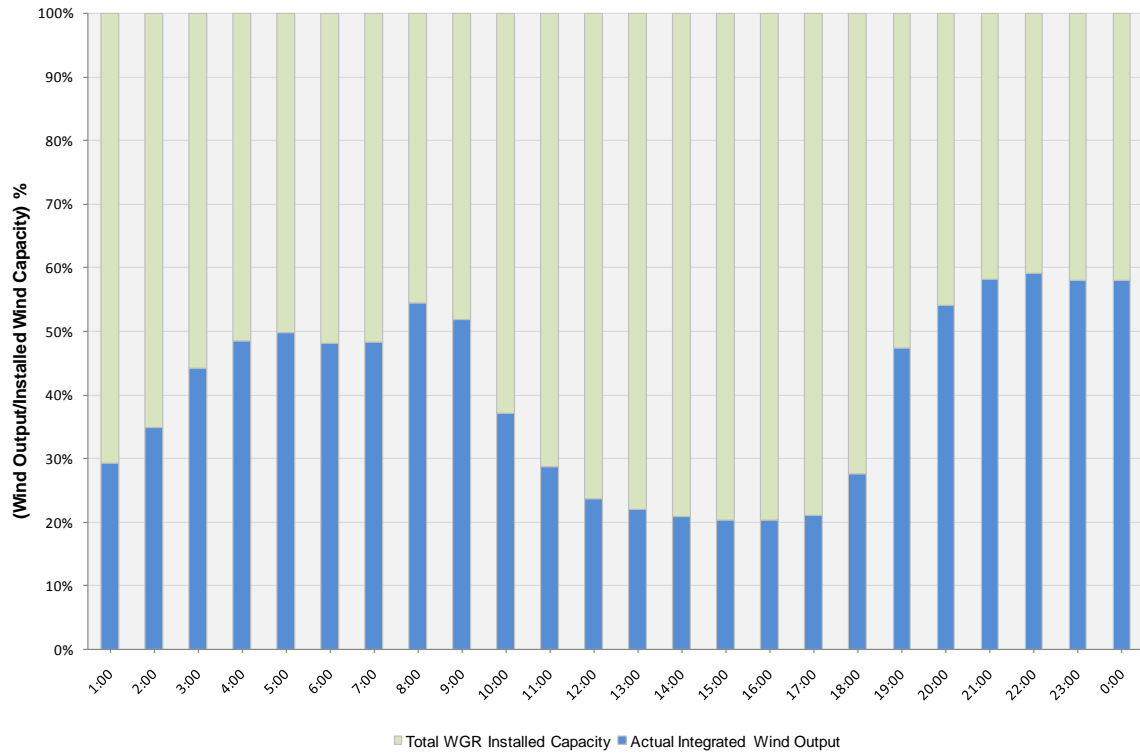
## ERCOT Grid Operations Wind Integration Report: 12/13/10

|                      |           |
|----------------------|-----------|
| Peak Load            | 44,376 MW |
| Load Peak Hour       | 08        |
| Wind Record 12/11/10 | 7,227 MW  |
| Max Wind Value       | 6,178 MW  |
| Wind Peak Hour       | 23:07:32  |
| Wind Integration %   | 18.12     |

Hourly Average Actual Load vs. Actual Wind Output  
12-13-2010



**Actual Wind Output as a Percentage of the Total Installed Wind Capacity**  
**12-13-2010**



**Actual Wind Output as a Percentage of the ERCOT Load**  
**12-13-2010**

